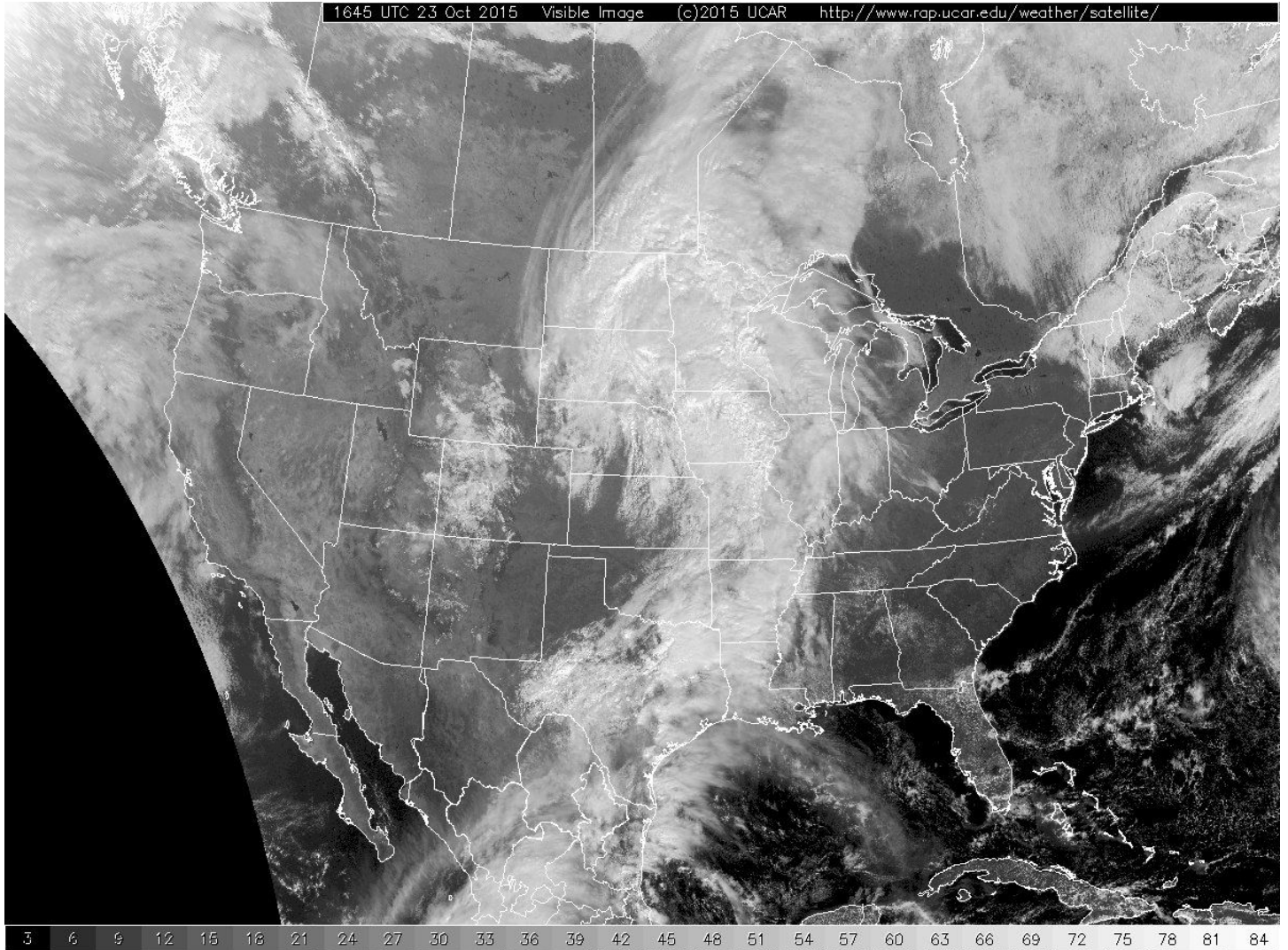


Extra directions for Lab 7: Forecasting Analysis

Use <http://weather.rap.ucar.edu/satellite/> throughout this lab for Questions 2, 3, 4, 5, and 6. Select “Large size” and always click on “Contiguous US”. On the left, you can select the type of image you need (visible, water vapor, etc).

Question 1

Use the following image.



Question 5

The question should read “Where is there a lot of moisture?” It’s okay to be general (for example, moisture moving over the northwest of the US.)

Question 8

Skip

Question 9

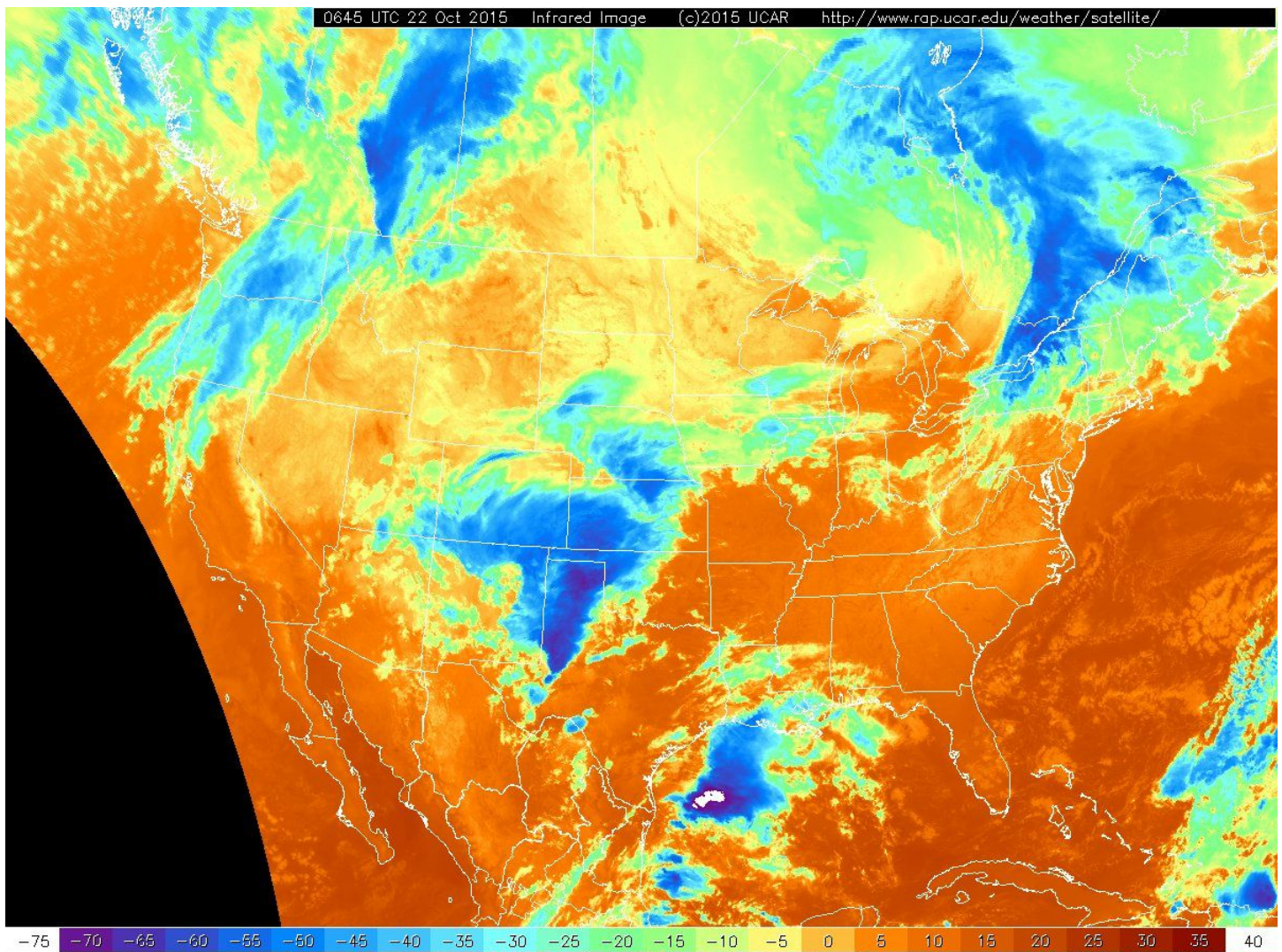
Skip

Question 10

Ignore the manual. Use the following images to answer the following questions:

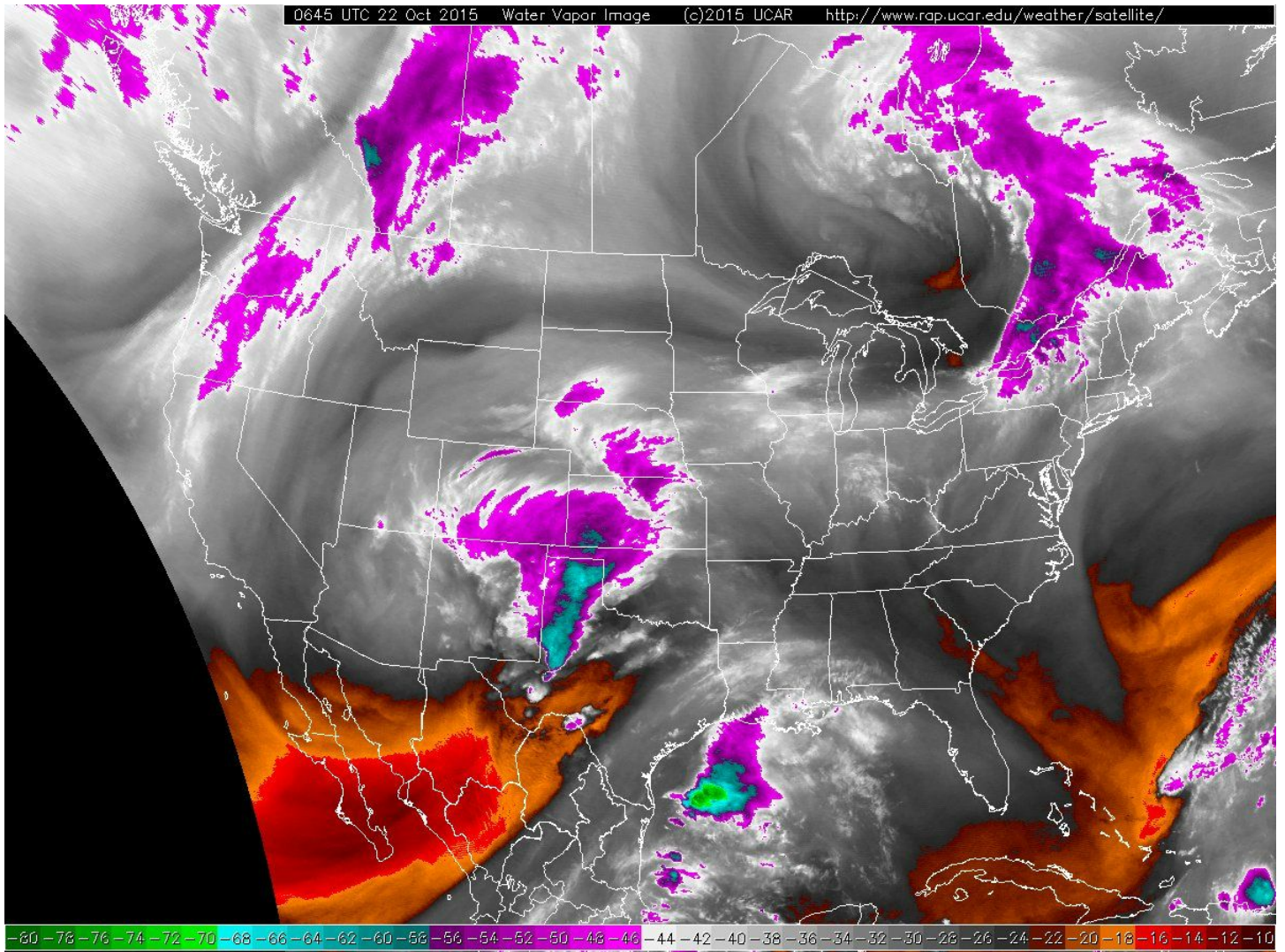
- In the infrared and water vapor map, what kind of cloud is forming off the eastern coast of Texas and Mexico?
- In the visible imagery map, what kinds of clouds are streaking across the southern portion of Texas and into Mexico?

Infrared:



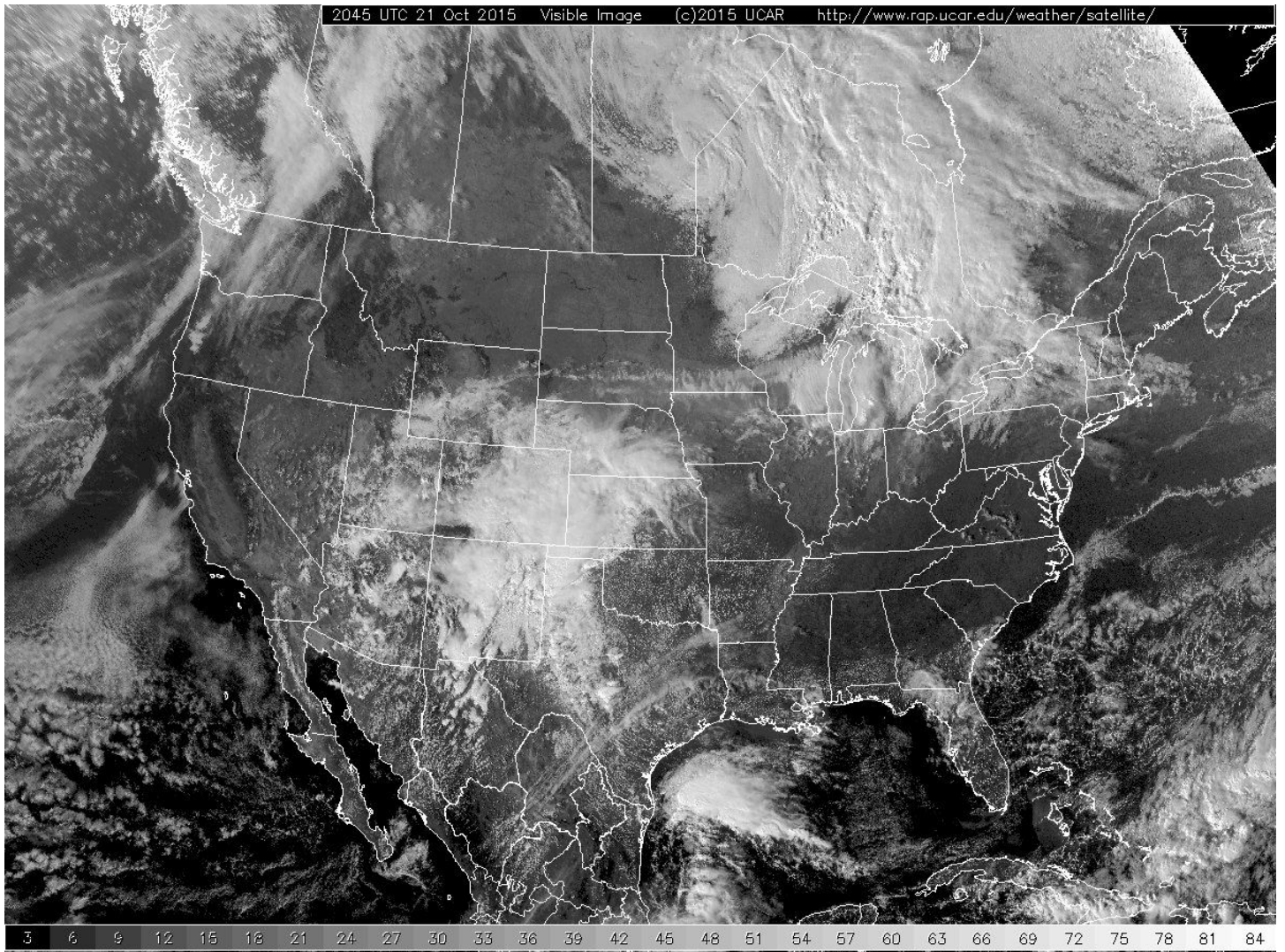
Question 10:

Water Vapor:



Question 10:

Visible:



Question 11

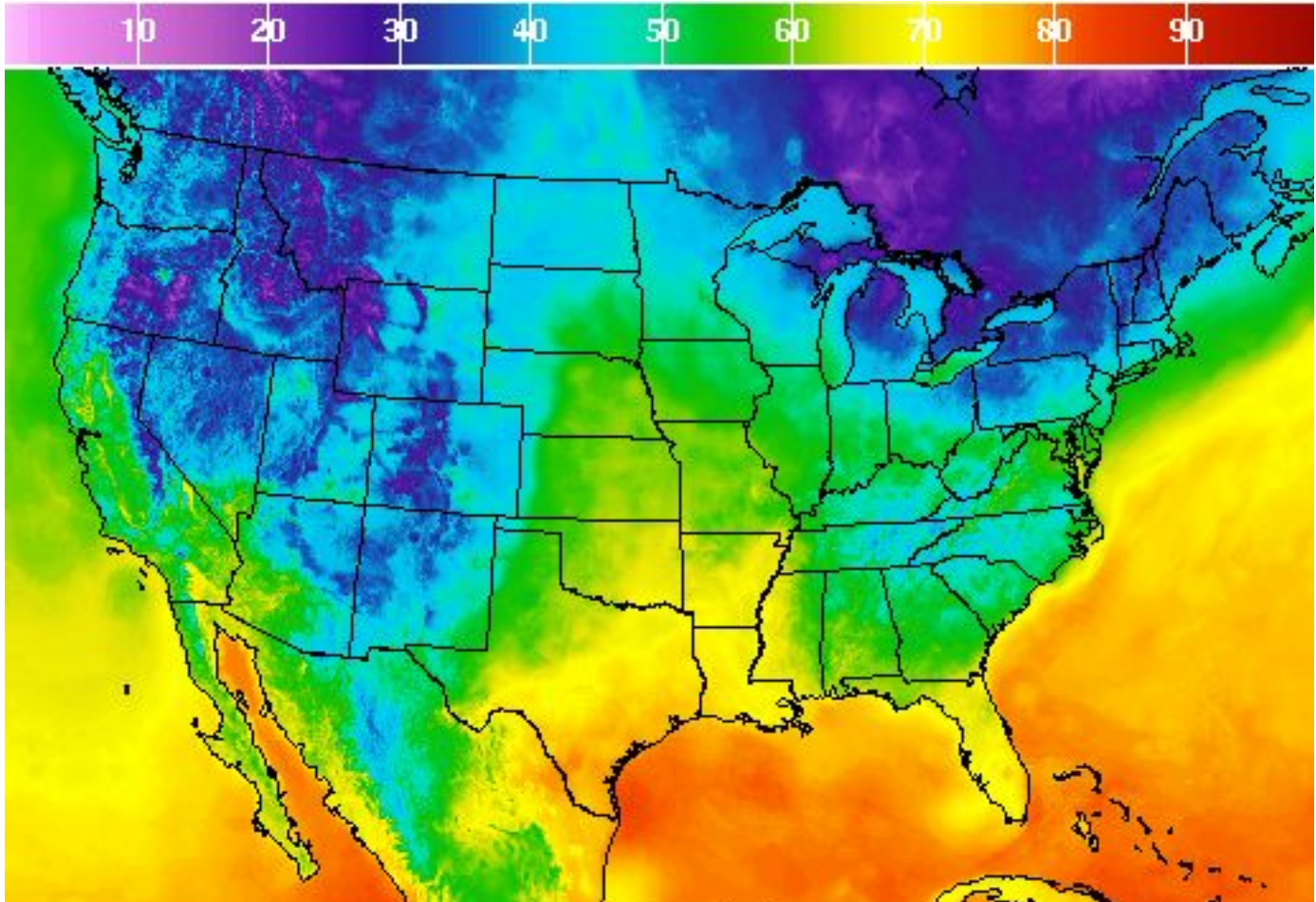
Ignore the manual. I've printed the map for you.

Question 12

Look at Question 13 to help you draw your jet stream that divides two different air masses.

Question 13

Ignore the manual. Here's the image you need.



Temperature(F) Fri Oct 23 2015 8AM EDT
(Fri Oct 23 2015 12Z)



Real-Time Mesoscale Analysis

Graphic created-Oct 23 9:29AM EDT



Question 16

Skip

Question 17

Skip