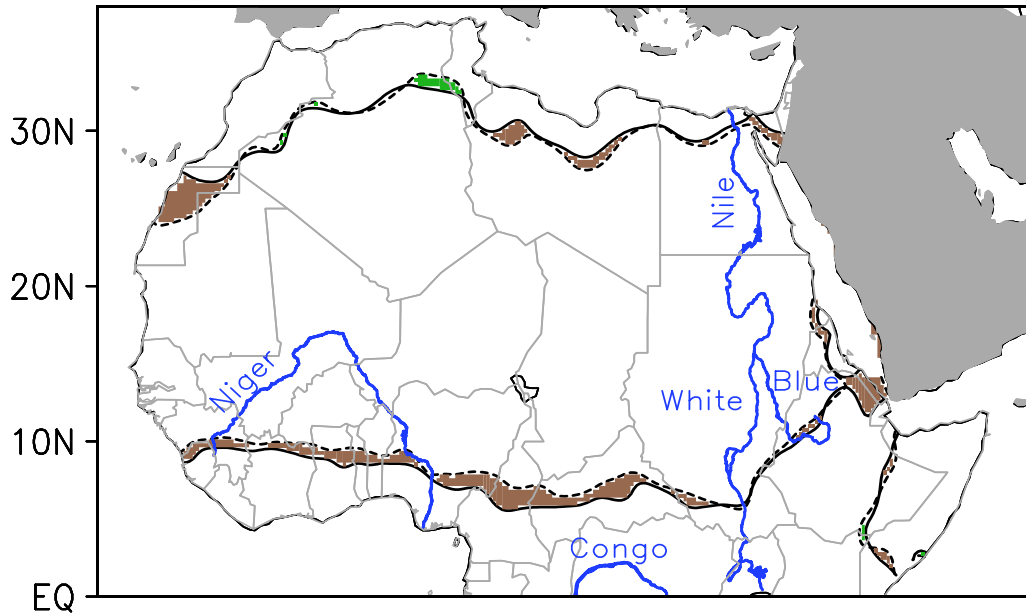
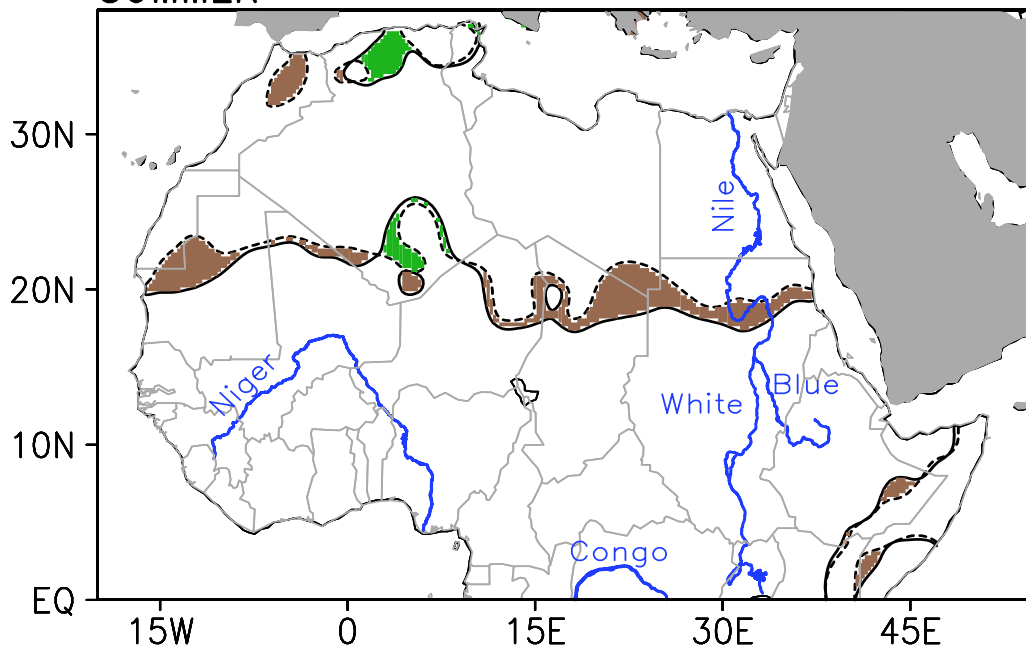


WINTER



SUMMER



The two images show the change in the boundaries of the Sahara Desert during the period 1920-2013, broken down by season. Dotted lines show the boundary as it existed in 1920, while solid lines show the boundary in 2013; both boundaries are averaged across the three months of each season. (Winter = Dec-Feb; Summer = Jun-Aug). Brown shaded regions indicate desert advance while green shaded regions indicate desert retreat.