



**AMS**  
American Meteorological Society

## Supplemental Material

*Journal of Climate*

Interdecadal Variation of Precipitation over the Hengduan Mountains during Rainy Seasons

<https://doi.org/10.1175/JCLI-D-18-0670.1>

© [Copyright 2019 American Meteorological Society](#)

Permission to use figures, tables, and brief excerpts from this work in scientific and educational works is hereby granted provided that the source is acknowledged. Any use of material in this work that is determined to be “fair use” under Section 107 of the U.S. Copyright Act or that satisfies the conditions specified in Section 108 of the U.S. Copyright Act (17 USC §108) does not require the AMS’s permission. Republication, systematic reproduction, posting in electronic form, such as on a website or in a searchable database, or other uses of this material, except as exempted by the above statement, requires written permission or a license from the AMS. All AMS journals and monograph publications are registered with the Copyright Clearance Center (<http://www.copyright.com>). Questions about permission to use materials for which AMS holds the copyright can also be directed to [permissions@ametsoc.org](mailto:permissions@ametsoc.org). Additional details are provided in the AMS Copyright Policy statement, available on the AMS website (<http://www.ametsoc.org/CopyrightInformation>).

## Supplementary material for

### Interdecadal variation of precipitation over the Hengduan Mountains during rainy seasons

Danhong Dong, Weichen Tao, William K. M. Lau, Zhanqing Li, Gang Huang, Pengfei

Wang

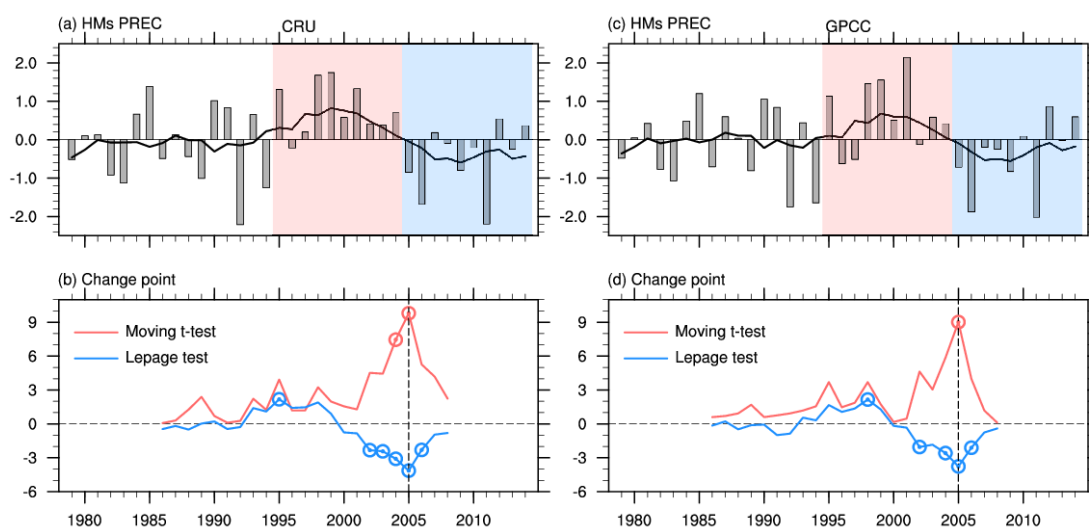


Fig. S1 As in Figs. 2a and 2b, but for CRU TS4.01 (left panels, a and b) and GPCC V7 (right panels, c and d).

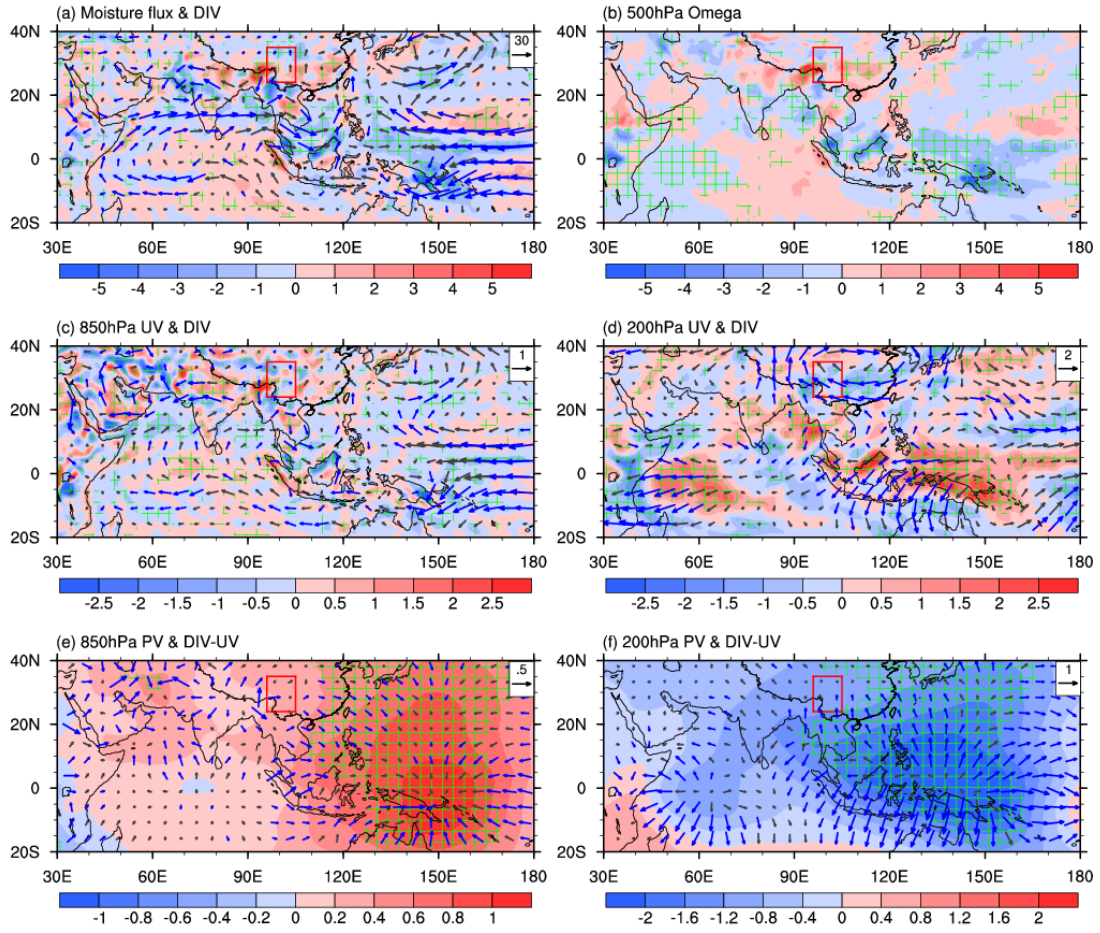


Fig. S2 As Fig. 4, but for ERA-interim.

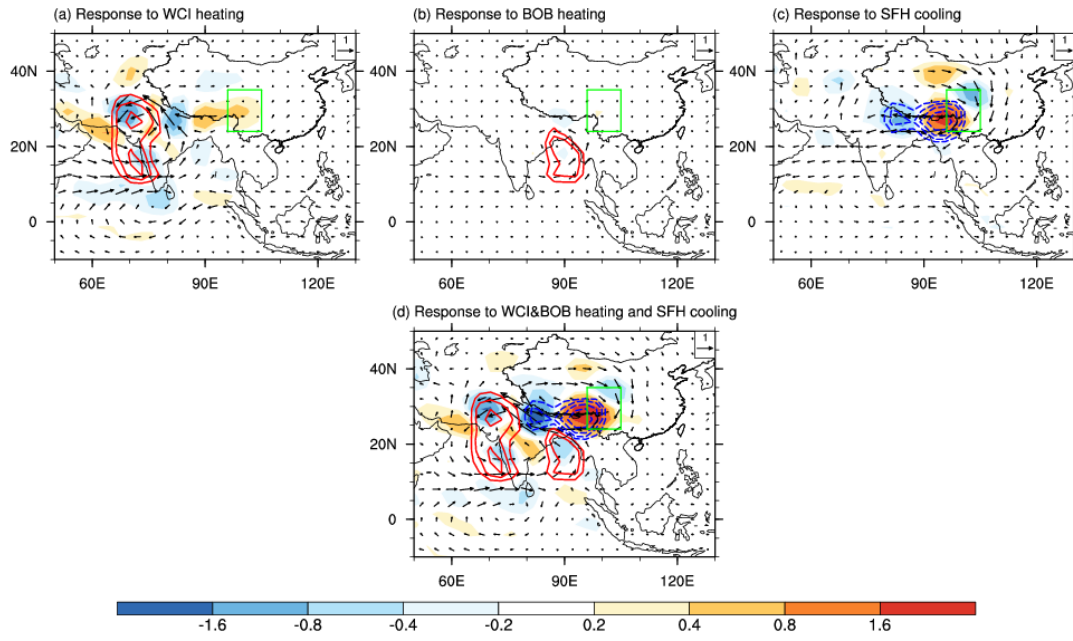


Fig. S3 As Fig. 10, but for 700hPa winds (vector;  $\text{m s}^{-1}$ ) and divergence (shaded;  $10^{-6} \text{ s}^{-1}$ ).

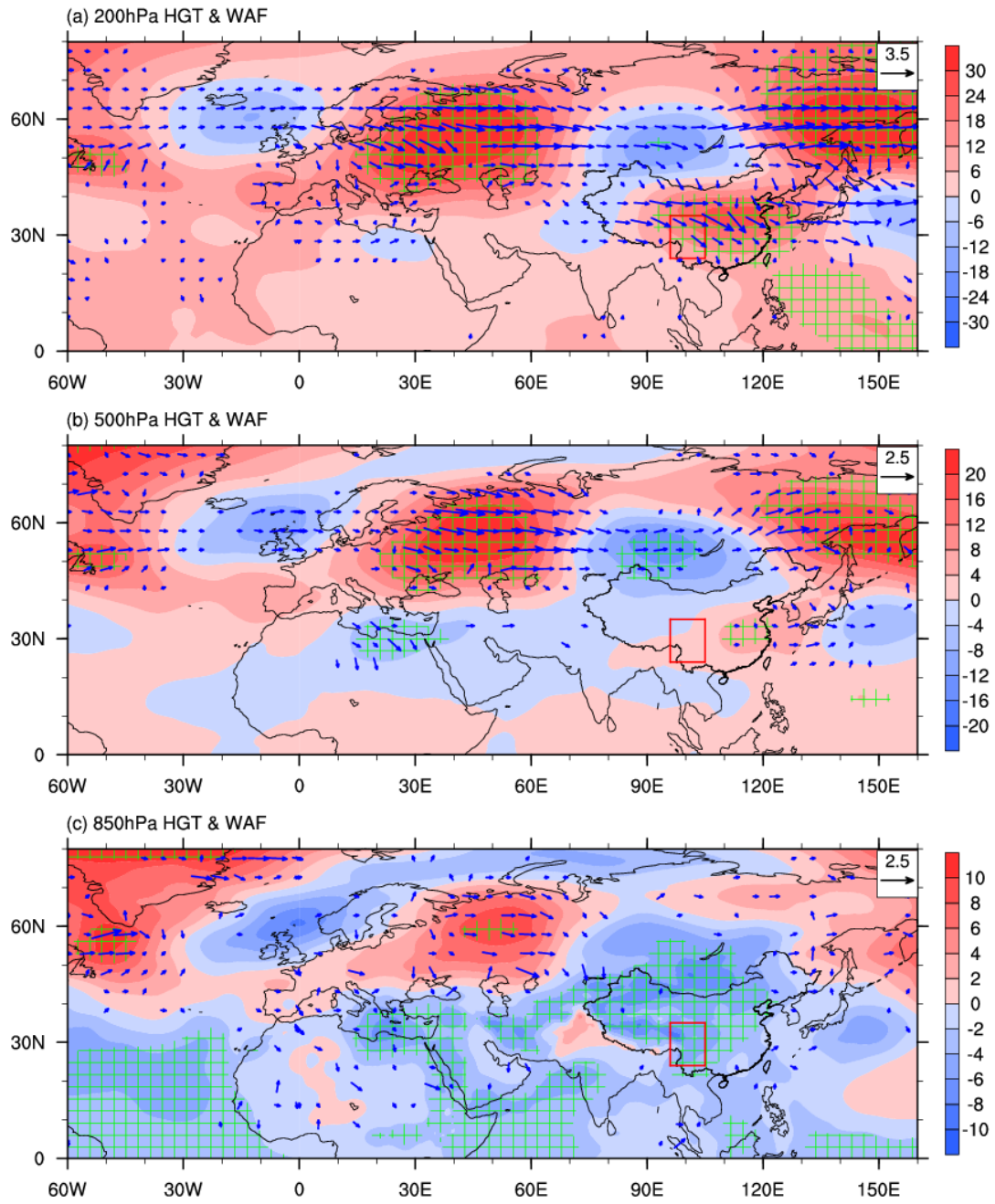


Fig. S4 As Fig. 11, but for ERA-interim.

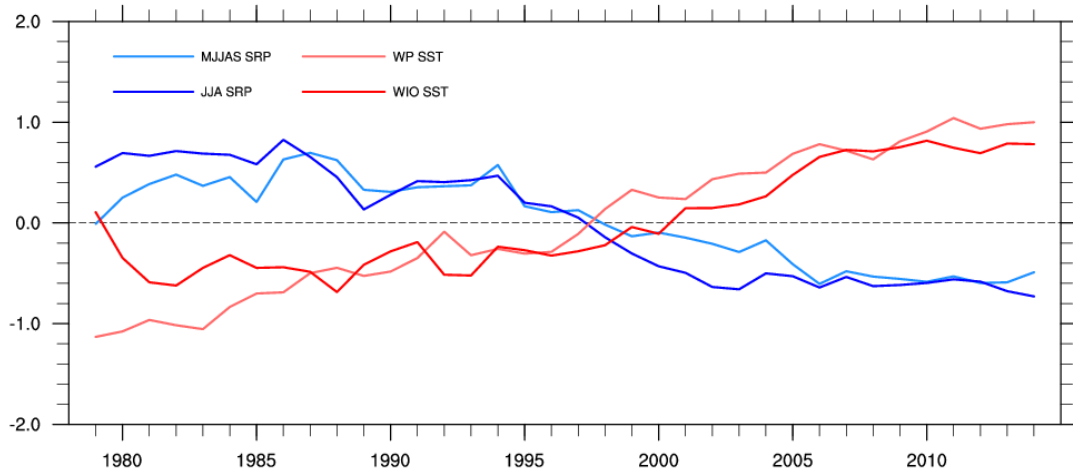


Fig. S5 Time series of interdecadal component of normalized SRP index during rainy seasons (light blue line) and boreal summer (dark blue line), rainy-season SST anomalies averaged over the WP (light red line; 20°S-20°N, 120°E-180°) and WIO (dark red line; 20°S-27.5°N, 40°E-75°E).