

Supplement of Atmos. Chem. Phys., 20, 13379–13397, 2020
<https://doi.org/10.5194/acp-20-13379-2020-supplement>
© Author(s) 2020. This work is distributed under
the Creative Commons Attribution 4.0 License.



Supplement of

Distinct aerosol effects on cloud-to-ground lightning in the plateau and basin regions of Sichuan, Southwest China

Pengguo Zhao et al.

Correspondence to: Zhanqing Li (zhanqing@umd.edu) and Pengguo Zhao (zpg@cuit.edu.cn)

The copyright of individual parts of the supplement might differ from the CC BY 4.0 License.

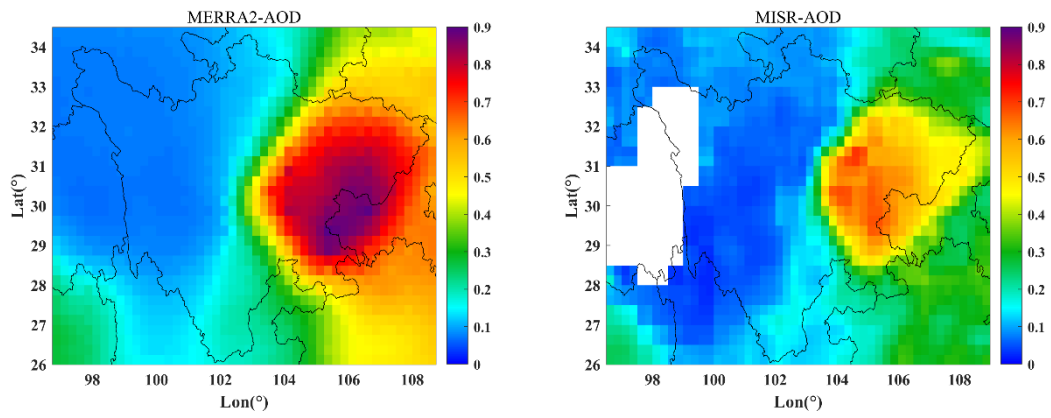


Figure S1. The spatial distribution of annual mean AOD based on MERRA2 and MISR data sets from 2005 to 2017.

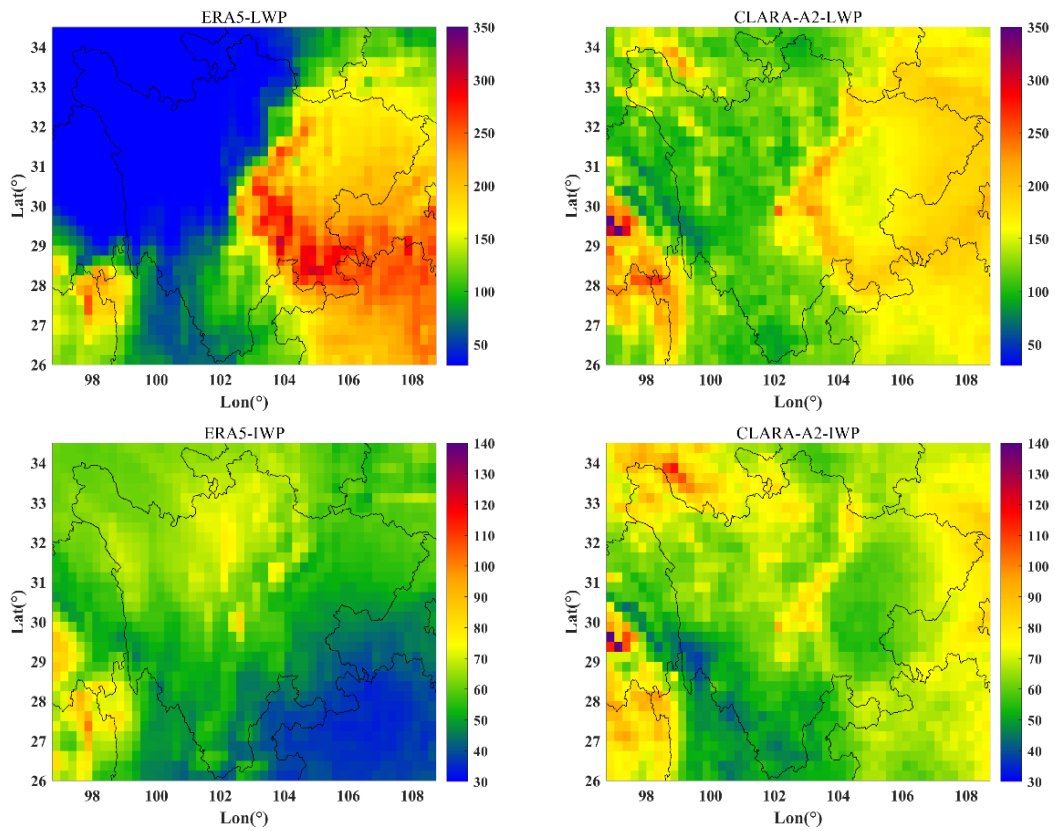


Figure S2. The spatial distribution of annual mean LWP and IWP based on ERA5 and CLARA-A2 data sets from 2005 to 2015.

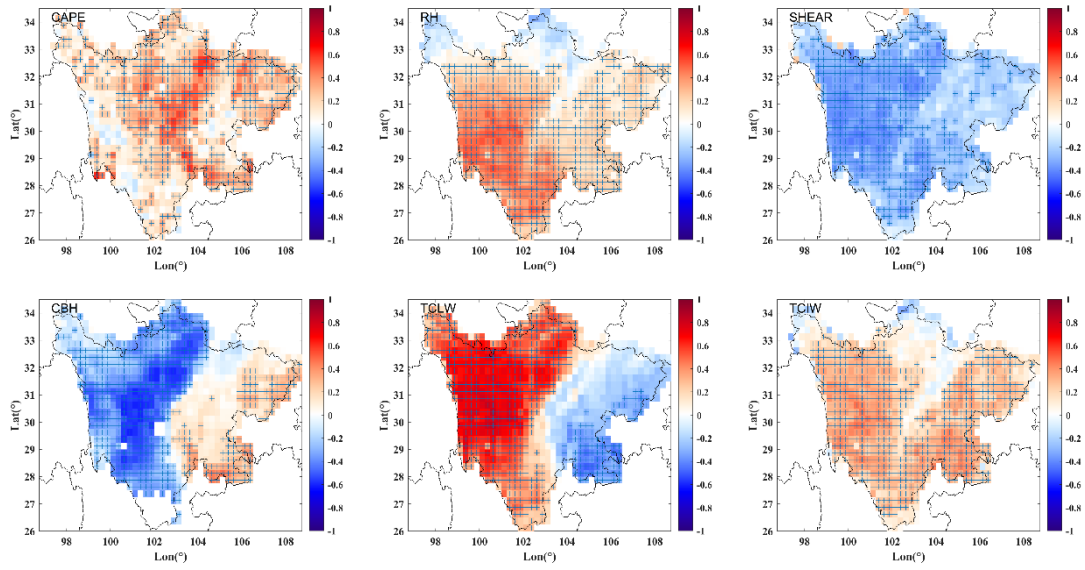


Figure S3. Pearson correlation coefficients between the anomalies of CAPE, RH, SHEAR, CBH, TCLW, and TCIW and CG lightning. Crosses in the figure indicate grid boxes that have passed the 95% significance test.